

VISS SG Fassaden

Structural Glazing Fassaden

Façades VISS SG

Façades toute en verre

VISS SG façades

Structural glazing façades

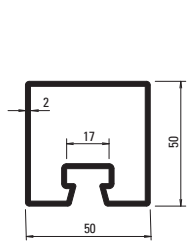
Inhaltsverzeichnis		VISS SG-Fassaden	
Sommaire		Façades VISS SG	
Content		VISS SG façades	

Profilübersicht	Sommaire des profilés	Summary of profiles	2
------------------------	------------------------------	----------------------------	----------

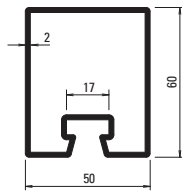
Schnittpunkte	Coupe de détails	Section details	6
----------------------	-------------------------	------------------------	----------

Konstruktions-Details	Détails de construction	Détails de construction	20
------------------------------	--------------------------------	--------------------------------	-----------

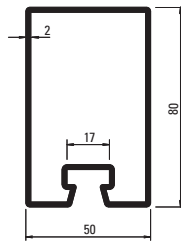
Anschlüsse am Bau	Raccords au mur	Attachment to structure	22
--------------------------	------------------------	--------------------------------	-----------



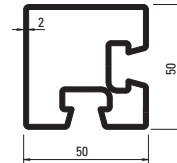
76.694
76.694 Z



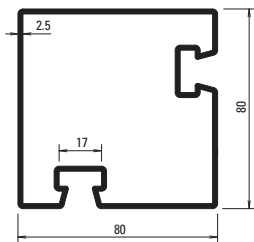
76.671
76.671 Z



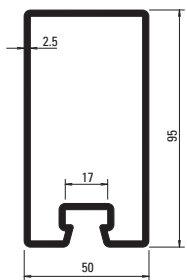
76.696
76.696 Z



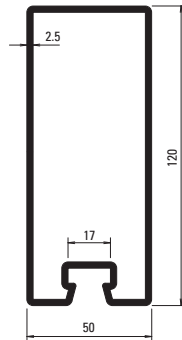
76.094
76.094 GV+GC



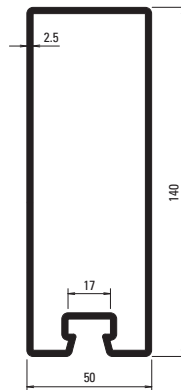
76.096
76.096 GV+GC



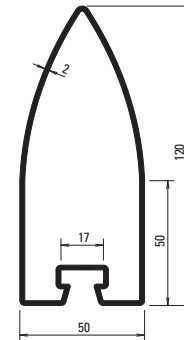
76.697
76.697 Z



76.679
76.679 Z



76.666
76.666 Z



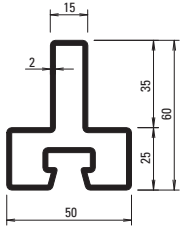
76.105
76.105 GV+GC

Profil-Nr.	G kg/m	F cm ²	I _x cm ⁴	W _x cm ³	I _y cm ⁴	W _y cm ³	U m ² /m
76.094	4,090	5,21	15,20	5,90	15,20	5,90	0,280
76.096	6,000	7,64	68,50	16,79	68,53	16,79	0,391
76.105	5,190	6,62	97,55	13,62	22,71	9,08	0,338
76.666	7,910	10,10	240,0	32,10	43,50	17,40	0,412
76.671	3,860	4,90	23,2	7,20	17,30	6,90	0,260
76.679	7,120	9,07	162,0	25,20	37,90	15,20	0,373
76.694	3,500	4,50	15,0	5,70	14,80	5,90	0,240
76.696	4,450	5,70	48,4	11,50	21,80	8,70	0,300
76.697	6,100	7,90	92,0	17,90	31,00	12,40	0,330

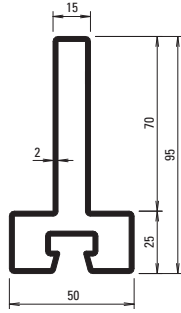
GV+GC = aussen galvanisch verzinkt ca. 15 µm und gelbchromatiert (EN 12329 – Fe//Zn15//C)

GV+GC = zingués galvanique env. 15 µm à l'extérieur et chromatisé jaune (EN 12329 – Fe//Zn15//C)

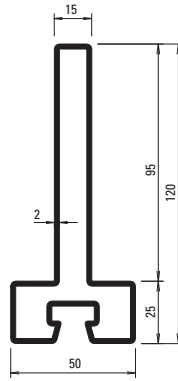
GV+GC = outside galvanised approx. 15 µm and yellow chromated (EN 12329 – Fe//Zn15//C)



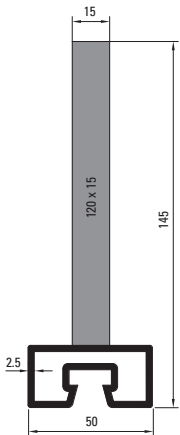
76.114
76.114 GV+GC



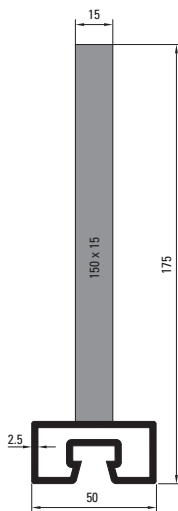
76.115
76.115 GV+GC



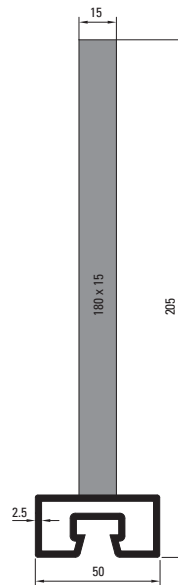
76.116
76.116 GV+GC



76.131



76.132



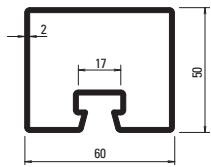
76.133

Profil-Nr.	G kg/m	F cm ²	I _x cm ⁴	W _x cm ³	I _y cm ⁴	W _y cm ³	U m ² /m
76.114	3,820	4,87	15,36	4,14	9,79	3,91	0,251
76.115	4,920	6,27	54,76	9,31	10,38	4,15	0,321
76.116	5,710	7,27	105,00	14,31	10,81	4,32	0,371
76.131	17,520	22,32	398,46	53,92	14,46	5,78	0,422
76.132	21,060	26,82	697,73	78,41	15,30	6,12	0,482
76.133	24,590	31,32	1117,7	107,42	16,14	6,46	0,542

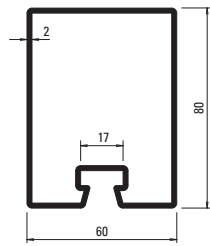
Z = aus feuerverzinktem Bandstahl, leicht eingeölt
 (Zinkauflage von 275 g/m² beidseitig = ca. 20 µm
 innen und aussen)

Z = en bandes d'acier zinguées au feu, légèrement
 huilées (couche de zinc 275 g/m² à deux côtés =
 env. 20 µm à l'intérieur et à l'extérieur)

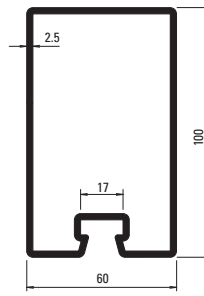
Z = made from hot-dip galvanised strip lightly oiled
 (Zinc coating 275 g/m² approx. 20 µm inside
 and out)



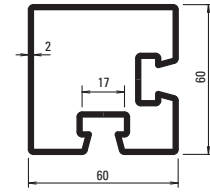
76.695
76.695 Z



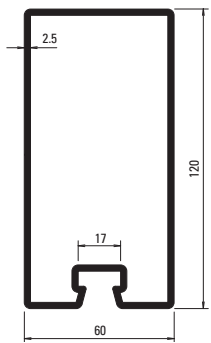
76.678
76.678 Z



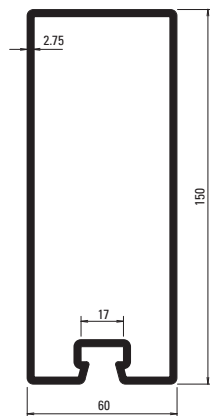
76.684
76.684 Z



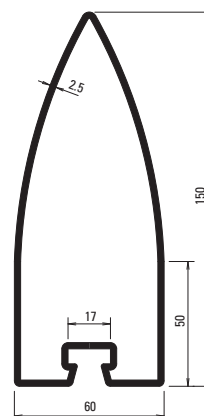
76.095



76.698
76.698 Z



76.667
76.667 Z



76.100

Z = aus feuerverzinktem Bandstahl, leicht eingeölt
 (Zinkauflage von 275 g/m² beidseitig = ca. 20 µm
 innen und aussen)

Z = en bandes d'acier zinguées au feu, légèrement
 huilées (couche de zinc 275 g/m² à deux côtés =
 env. 20 µm à l'intérieur et à l'extérieur)

Z = made from hot-dip galvanised strip lightly oiled
 (Zinc coating 275 g/m² approx. 20 µm inside
 and out)

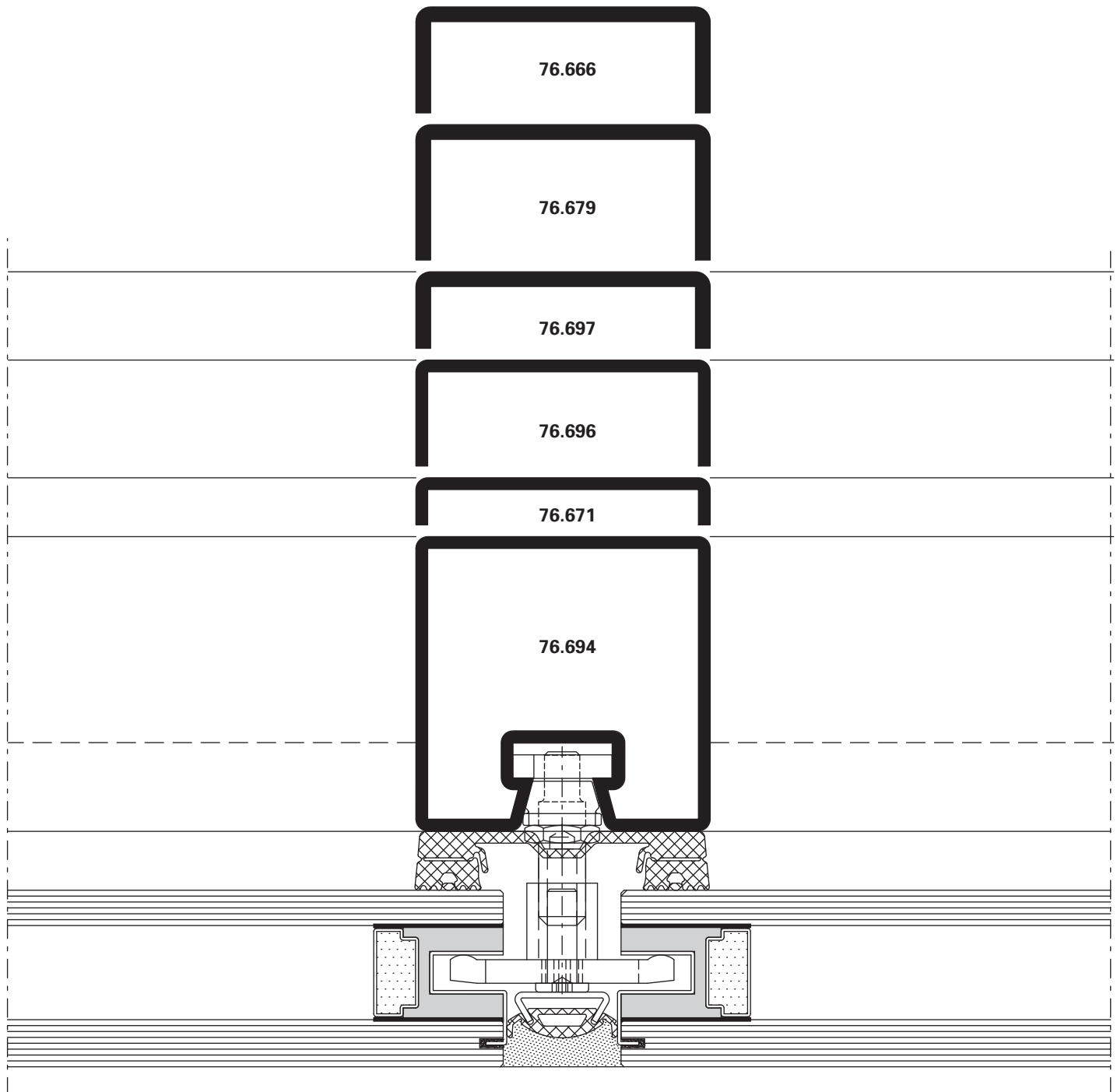
Profil-Nr.	G kg/m	F cm ²	I _x cm ⁴	W _x cm ³	I _y cm ⁴	W _y cm ³	U m ² /m
76.095	4,750	6,05	27,2	8,56	27,17	8,56	0,311
76.100	7,840	9,98	231,8	26,07	47,87	15,96	0,409
76.667	9,530	12,10	343,0	43,00	75,10	25,00	0,452
76.678	4,800	6,11	53,9	12,60	33,20	11,10	0,320

Profil-Nr.	G kg/m	F cm ²	I _x cm ⁴	W _x cm ³	I _y cm ⁴	W _y cm ³	U m ² /m
76.684	6,730	8,57	114,0	21,30	48,30	16,10	0,352
76.695	3,800	4,90	17,6	6,70	22,80	7,60	0,260
76.698	7,500	9,67	183,0	28,30	55,50	18,50	0,400

VISS SG TVS
Pfosten-Detail
Ansichtsbreite 50 mm

VISS SG TVS
Détail de la montante
Largeur de face 50 mm

VISS SG TVS
Detail of mullion
Width 50 mm

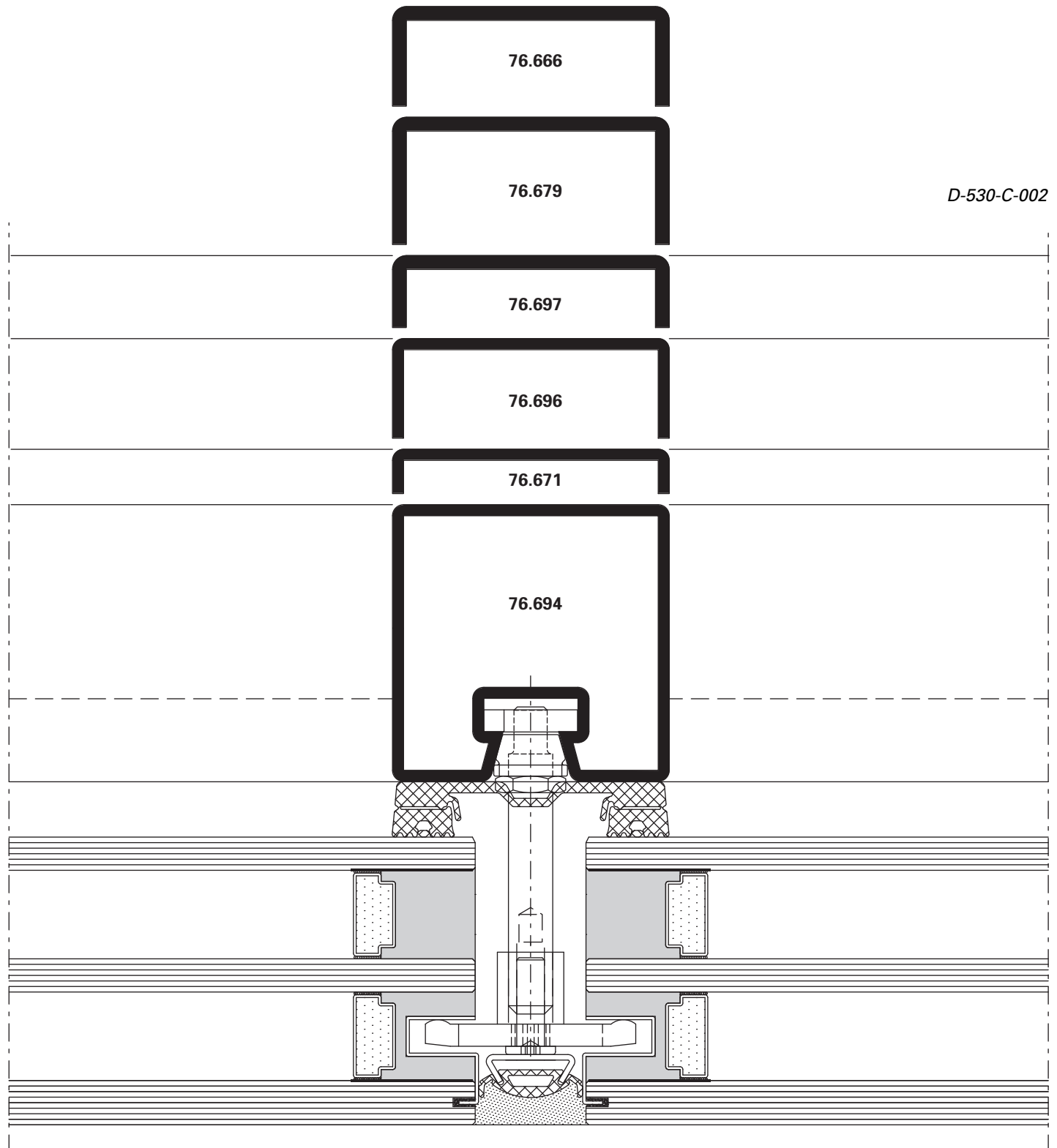


D-530-C-001

VISS SG TVS
Pfosten-Detail
Ansichtsbreite 50 mm

VISS SG TVS
Détail de la montante
Largeur de face 50 mm

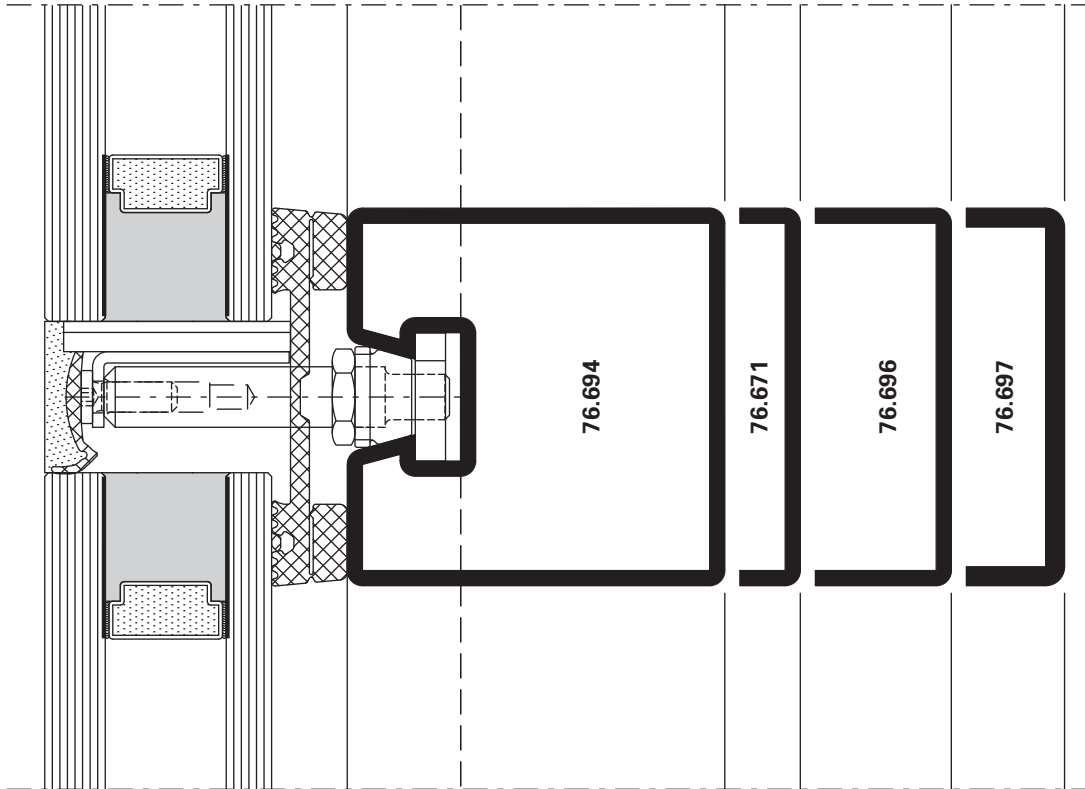
VISS SG TVS
Detail of mullion
Width 50 mm



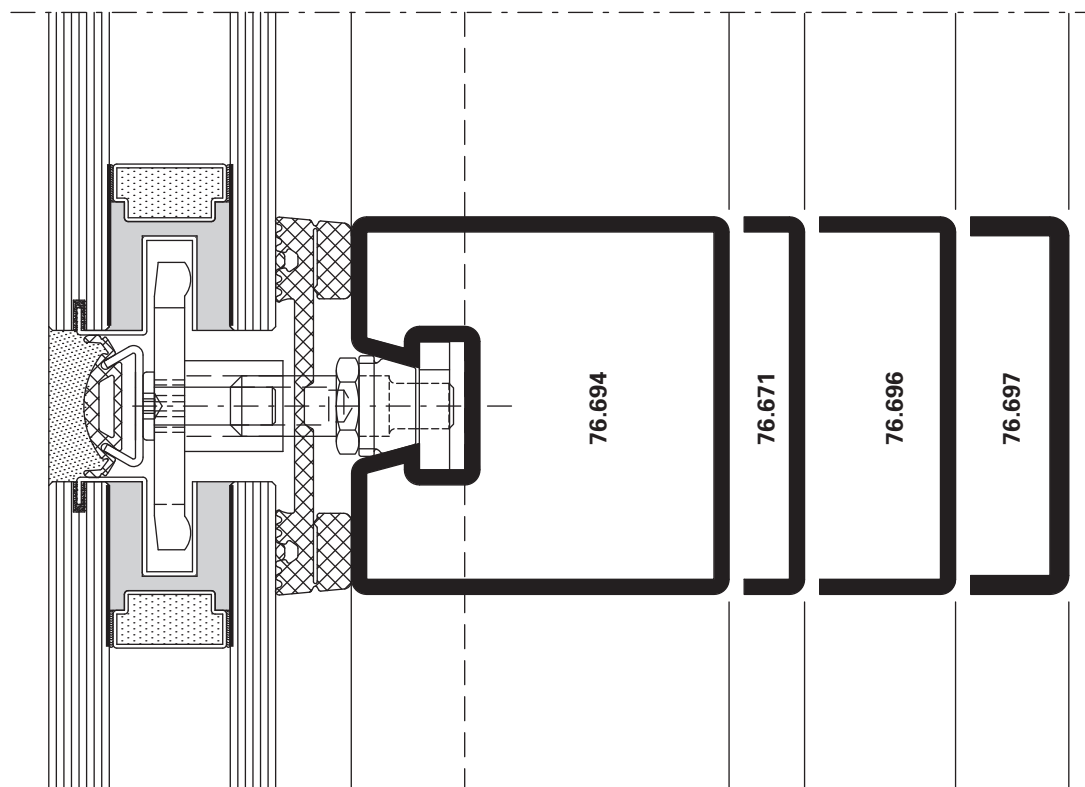
VISS SG TVS
Riegel-Detail
Ansichtsbreite 50 mm

VISS SG TVS
Détail de la traverse
Largeur de face 50 mm

VISS SG TVS
Detail of transom
Width 50 mm



D-530-C-003

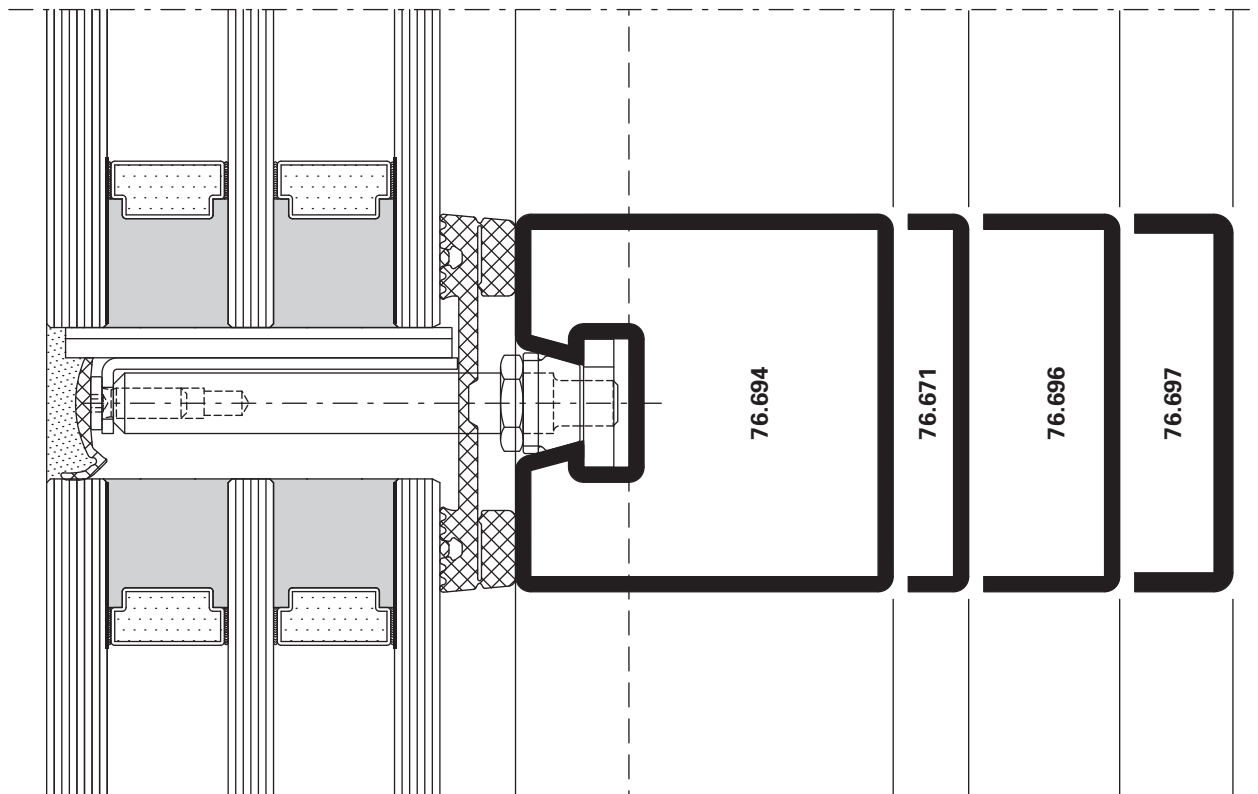


D-530-C-005

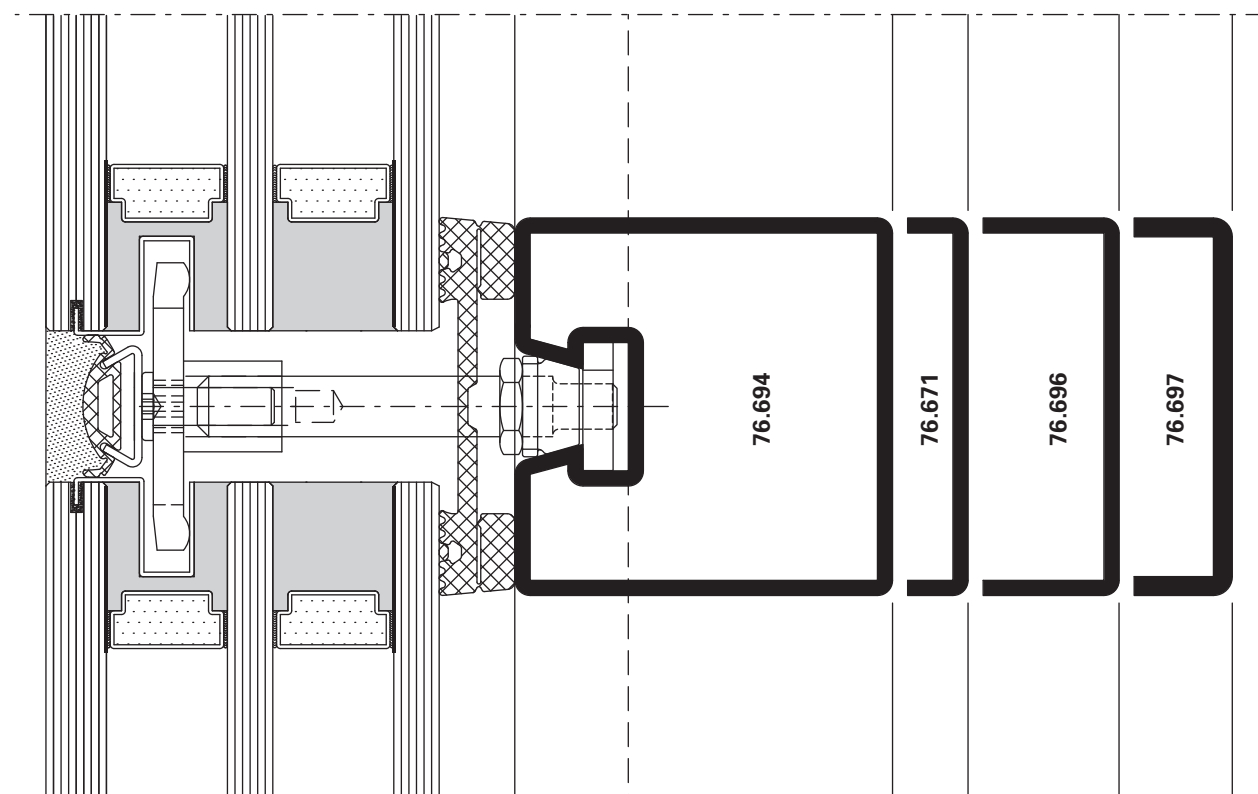
VISS SG TVS
Riegel-Detail
Ansichtsbreite 50 mm

VISS SG TVS
Détail de la traverse
Largeur de face 50 mm

VISS SG TVS
Detail of transom
Width 50 mm



D-530-C-004



D-530-C-006

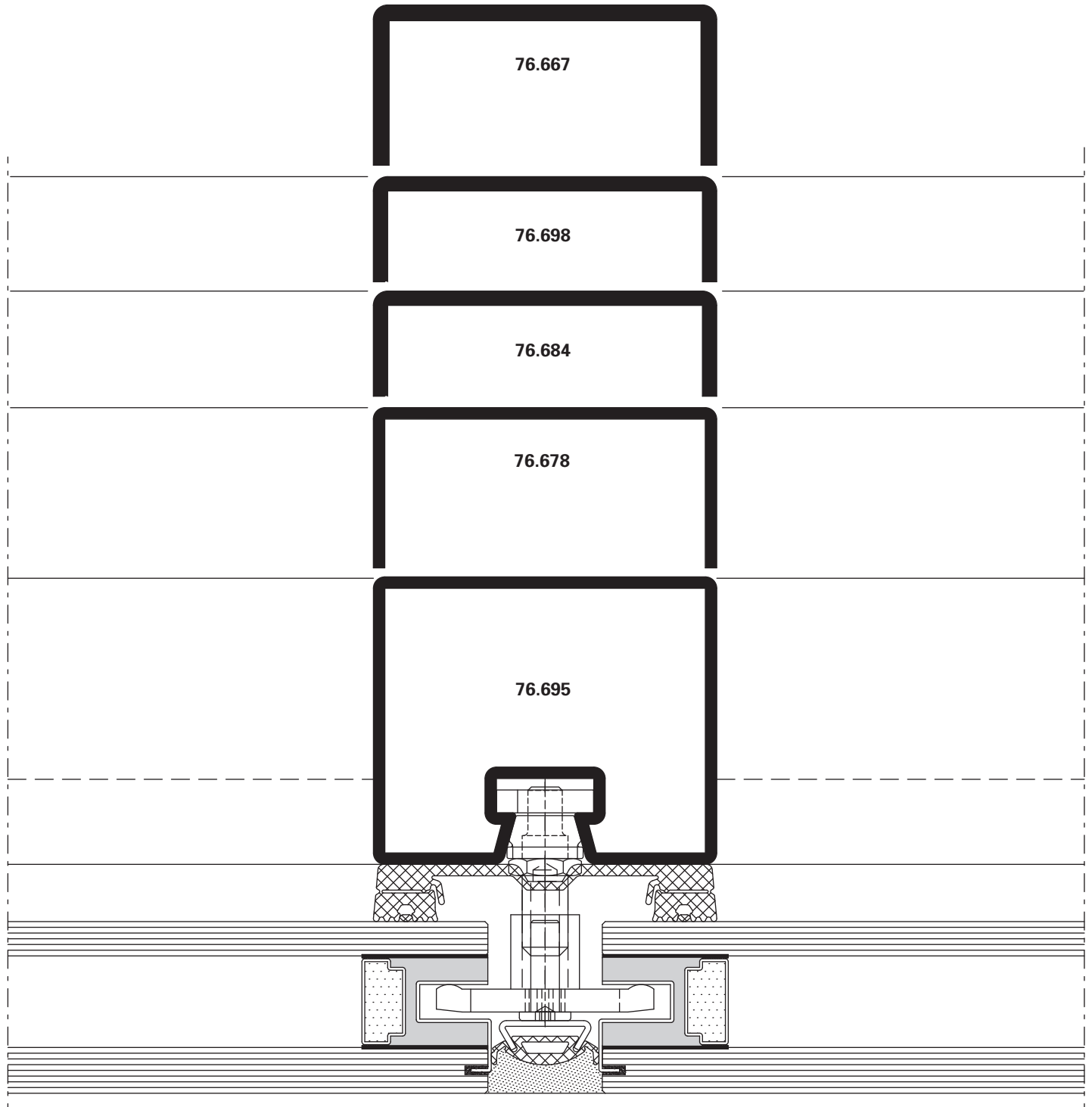
Schnittpunkte im Massstab 1:1
Coupe de détails à l'échelle 1:1
Section details on scale 1:1

VISS SG-Fassaden
Façades VISS SG
VISS SG façades

VISS SG TVS
Pfosten-Detail
Ansichtsbreite 60 mm

VISS SG TVS
Détail de la montante
Largeur de face 60 mm

VISS SG TVS
Detail of mullion
Width 60 mm

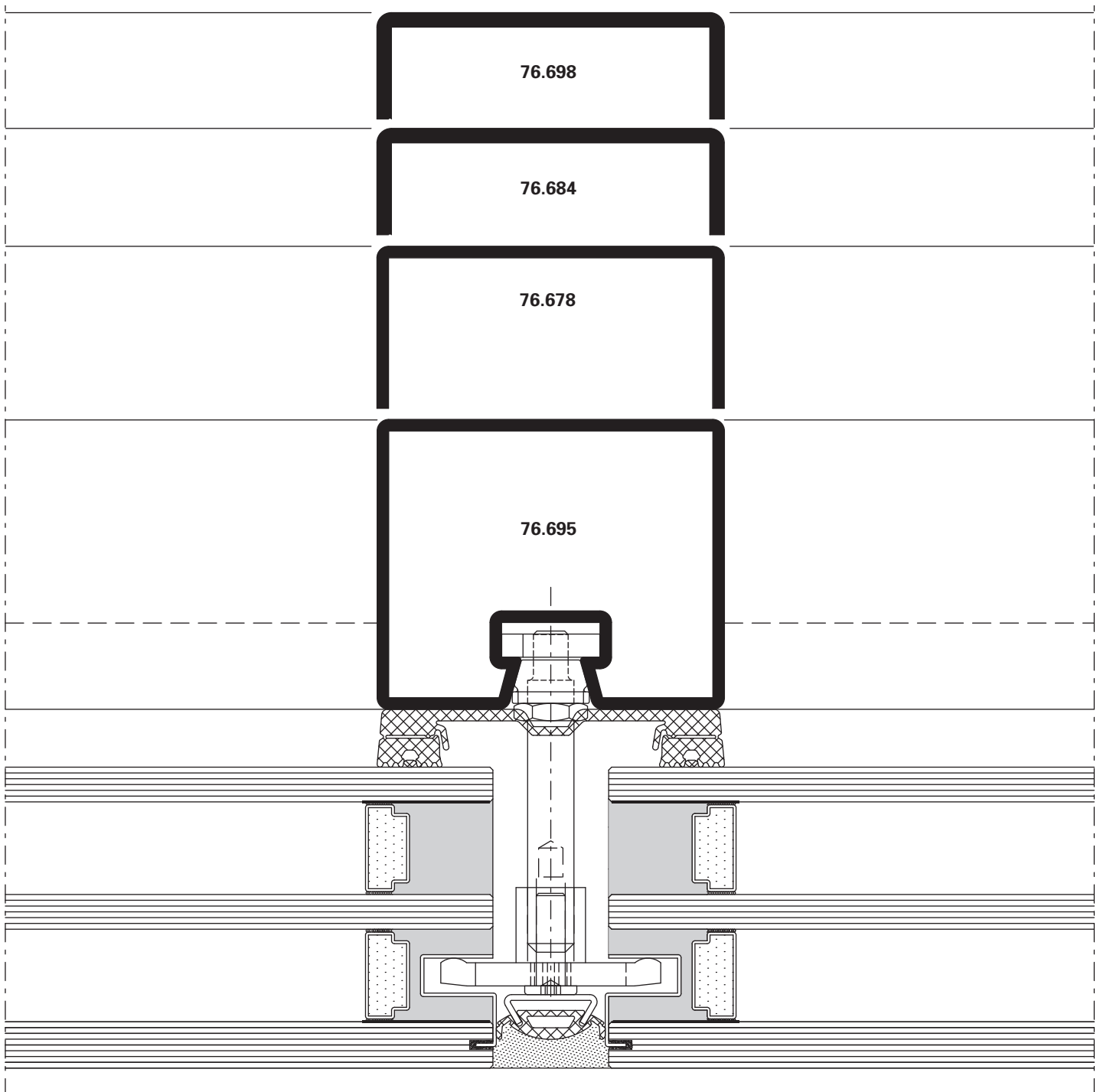


D-630-C-001

VISS SG TVS
Pfosten-Detail
Ansichtsbreite 60 mm

VISS SG TVS
Détail de la montante
Largeur de face 60 mm

VISS SG TVS
Detail of mullion
Width 60 mm



D-630-C-002

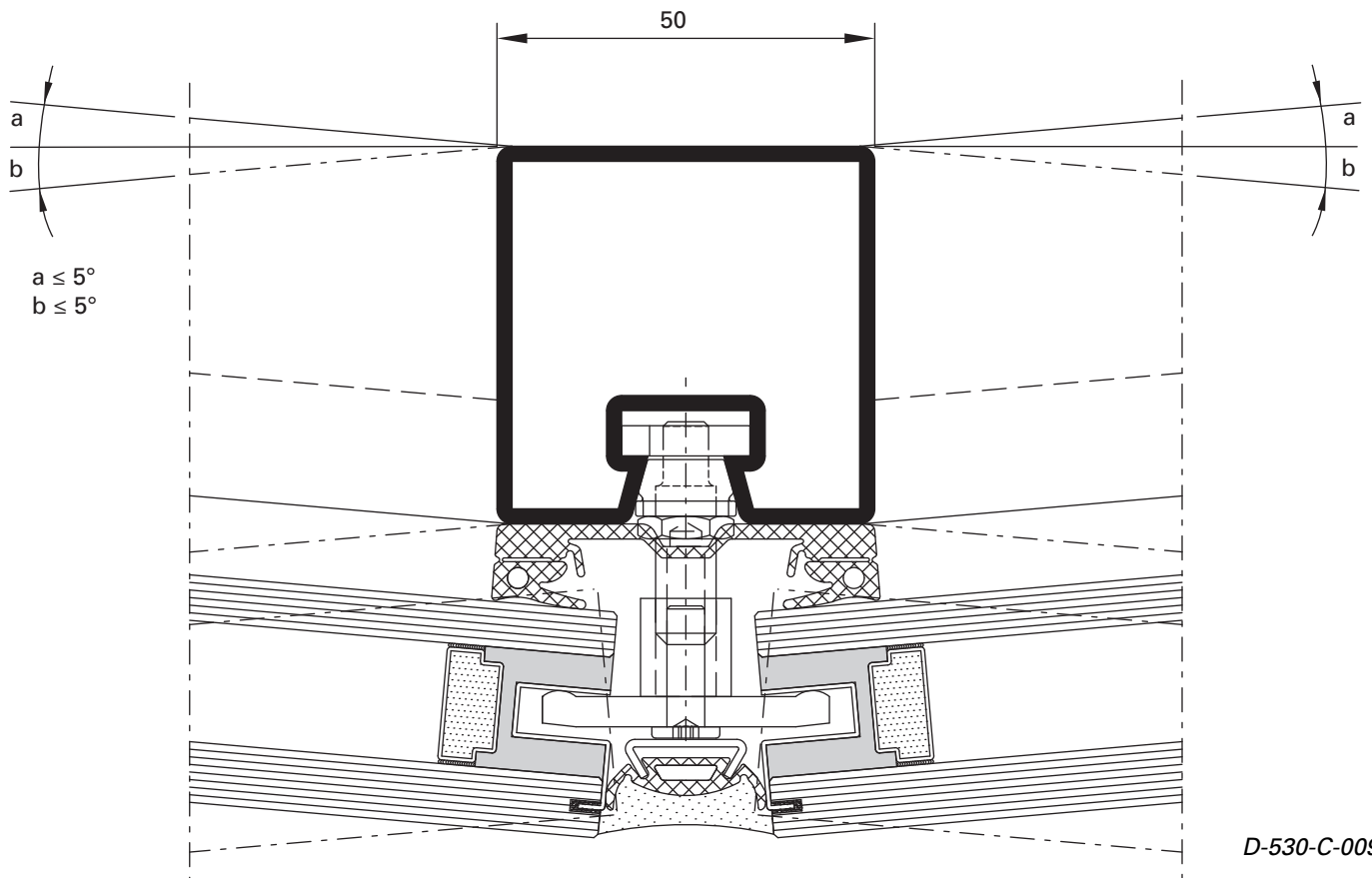
Schnittpunkte im Massstab 1:1
Coupe de détails à l'échelle 1:1
Section details on scale 1:1

VISS SG-Fassaden
Façades VISS SG
VISS SG façades

VISS SG TVS
Segmentverglasung
Pfosten-Detail
Ansichtsbreite 50 mm

VISS SG TVS
Vitrage segmenté
Détail de la montante
Largeur de face 50 mm

VISS SG TVS
Segmental glazing
Detail of mullion
Width 50 mm



D-530-C-009

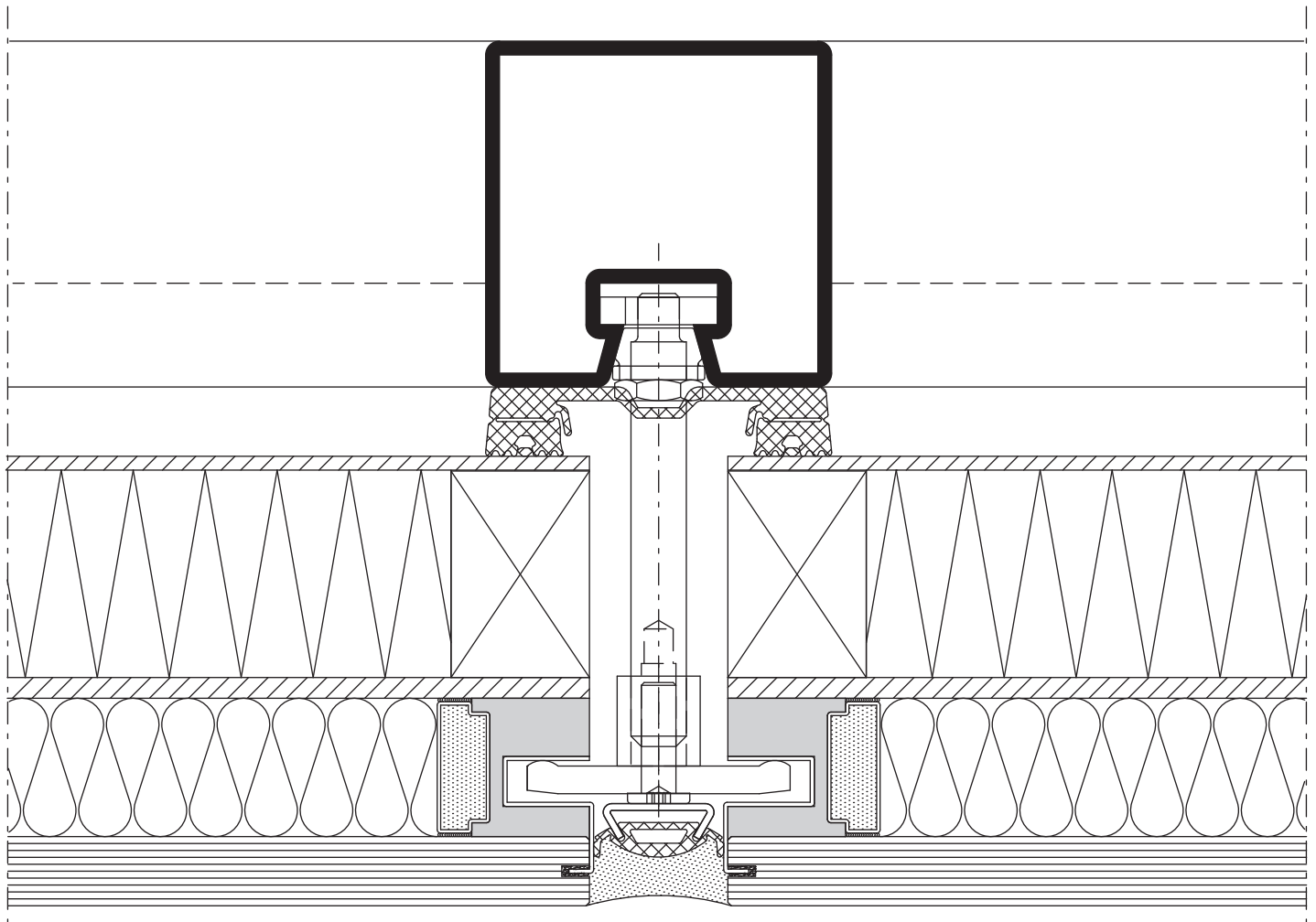
Schnittpunkte im Massstab 1:1
Coupe de détails à l'échelle 1:1
Section details on scale 1:1

VISS SG-Fassaden
Façades VISS SG
VISS SG façades

VISS SG TVS
Paneelverglasung
Pfosten-Detail
Ansichtsbreite 50 mm

VISS SG TVS
Vitrage panneau
Détail de la montante
Largeur de face 50 mm

VISS SG TVS
Panel glazing
Detail of mullion
Width 50 mm



D-530-C-010

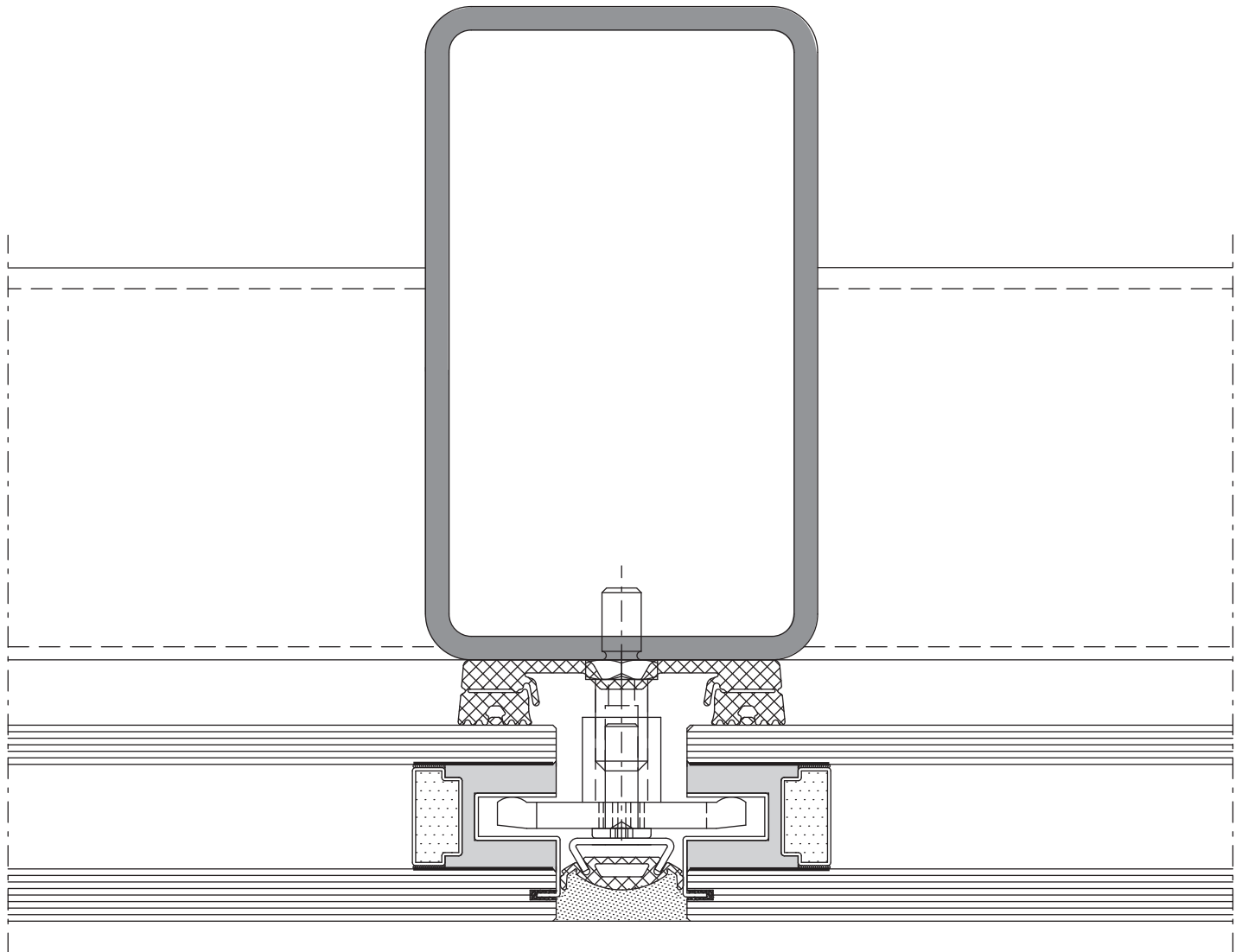
Schnittpunkte im Massstab 1:1
Coupe de détails à l'échelle 1:1
Section details on scale 1:1

VISS SG-Fassaden
Façades VISS SG
VISS SG façades

VISS Basic SG TVS
Pfosten-Detail
Ansichtsbreite 50 mm

VISS Basic SG TVS
Détail de la montante
Largeur de face 50 mm

VISS Basic SG TVS
Detail of mullion
Width 50 mm

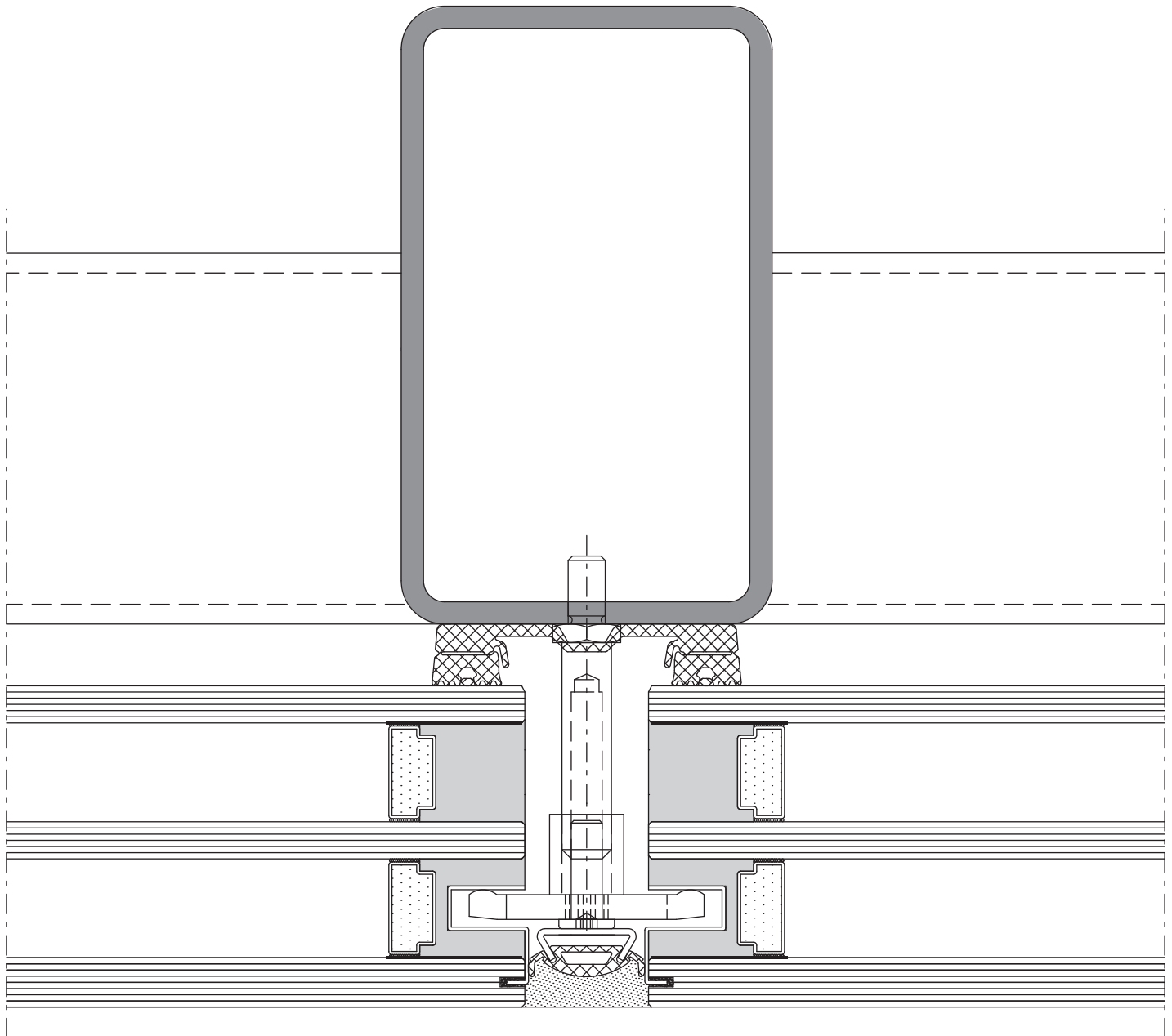


D-531-C-001

VISS Basic SG TVS
Pfosten-Detail
Ansichtsbreite 50 mm

VISS Basic SG TVS
Détail de la montante
Largeur de face 50 mm

VISS Basic SG TVS
Detail of mullion
Width 50 mm



D-531-C-002

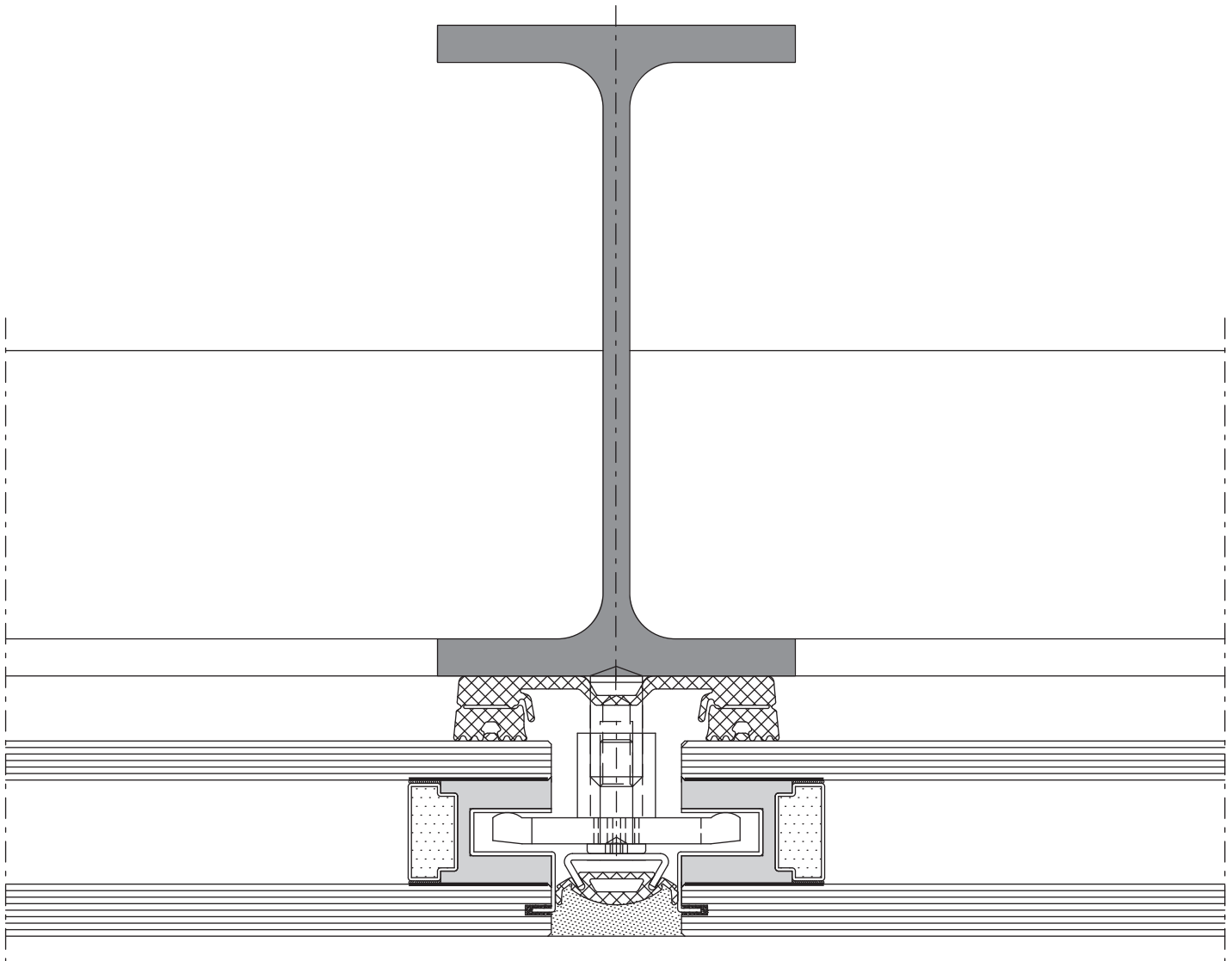
Schnittpunkte im Massstab 1:1
Coupe de détails à l'échelle 1:1
Section details on scale 1:1

VISS SG-Fassaden
Façades VISS SG
VISS SG façades

VISS Basic SG TVS
Pfosten-Detail
Ansichtsbreite 50 mm

VISS Basic SG TVS
Détail de la montante
Largeur de face 50 mm

VISS Basic SG TVS
Detail of mullion
Width 50 mm

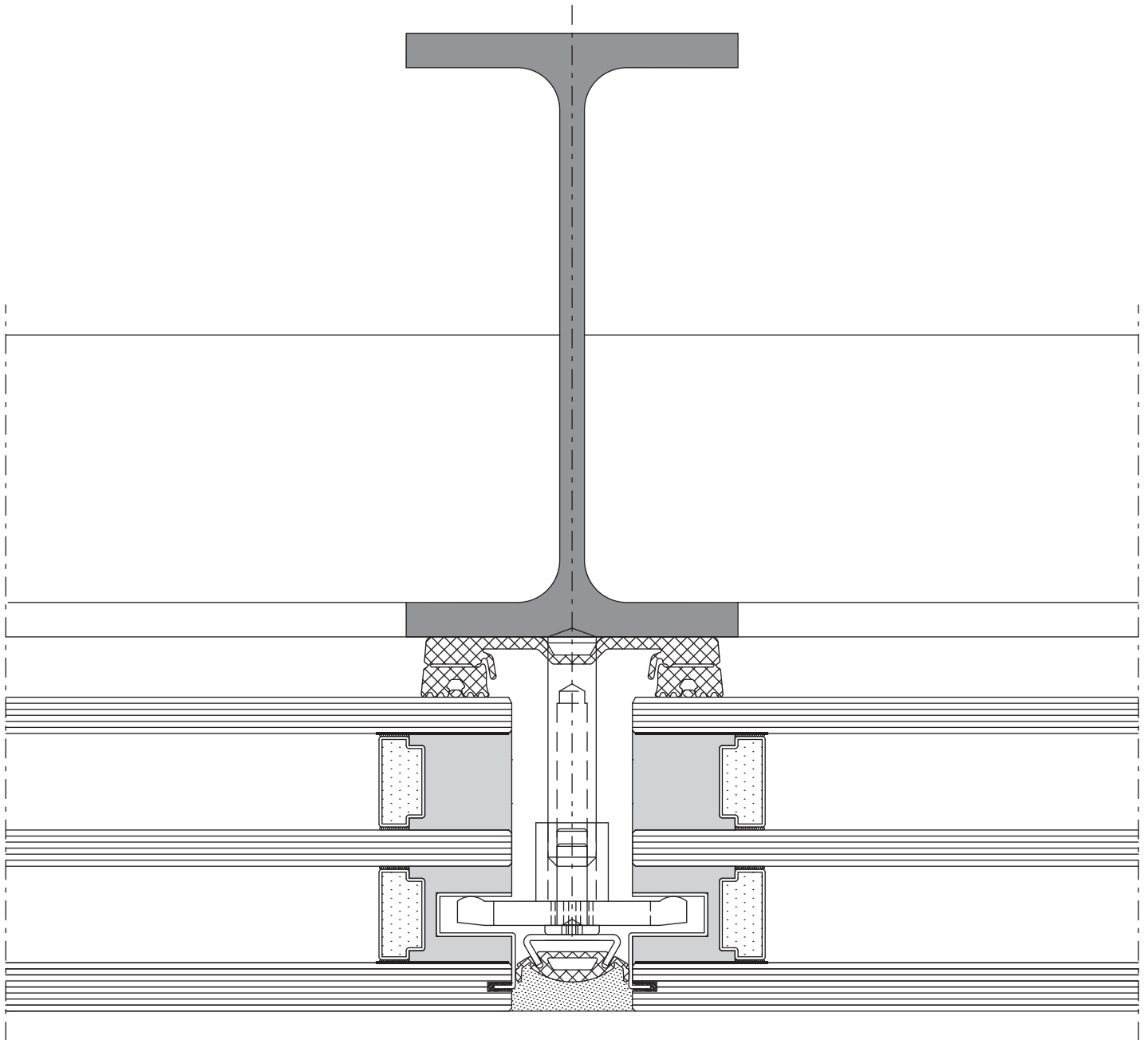


D-532-C-001

VISS Basic SG TVS
Pfosten-Detail
Ansichtsbreite 50 mm

VISS Basic SG TVS
Détail de la montante
Largeur de face 50 mm

VISS Basic SG TVS
Detail of mullion
Width 50 mm

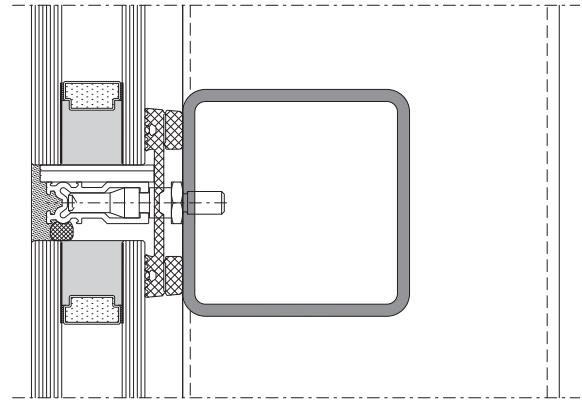
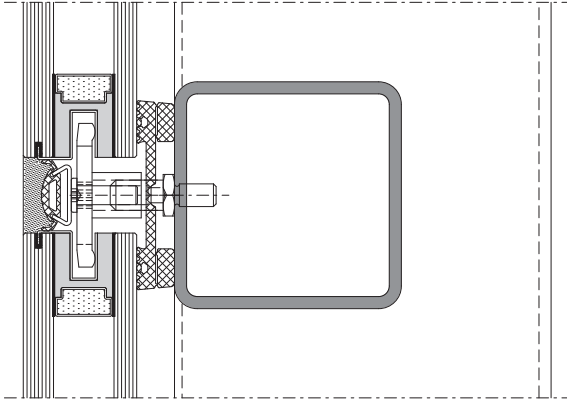


D-532-C-002

VISS Basic SG TVS
Riegel-Detail
Ansichtsbreite 50 mm

VISS Basic SG TVS
Détail de la traverse
Largeur de face 50 mm

VISS Basic SG TVS
Detail of transom
Width 50 mm



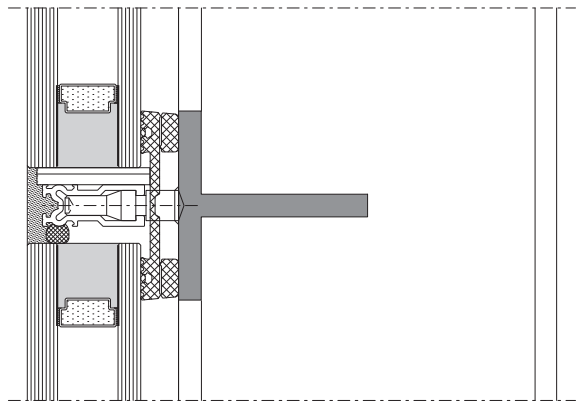
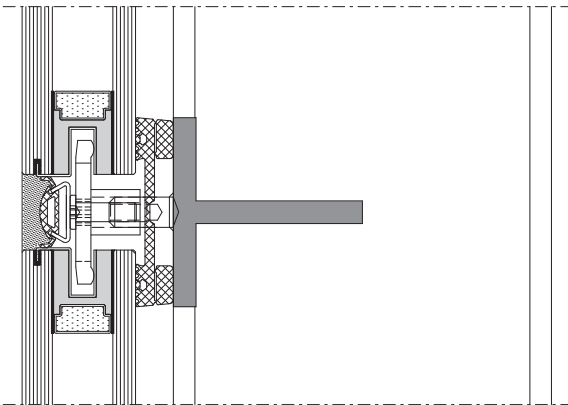
D-531-C-003

D-531-C-004

VISS Basic SG TVS
Riegel-Detail
Ansichtsbreite 50 mm

VISS Basic SG TVS
Détail de la traverse
Largeur de face 50 mm

VISS Basic SG TVS
Detail of transom
Width 50 mm



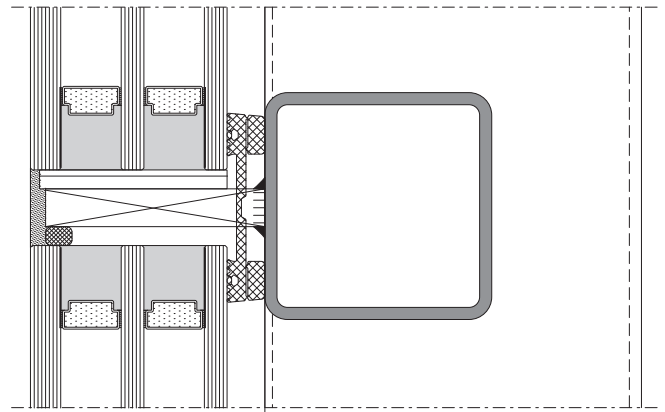
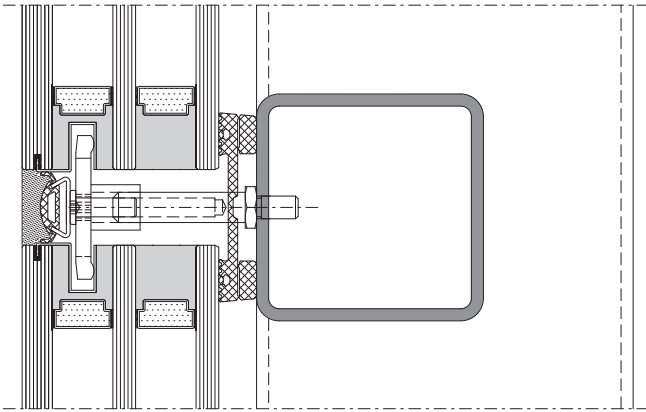
D-532-C-003

D-532-C-006

VISS Basic SG TVS
Riegel-Detail
Ansichtsbreite 50 mm

VISS Basic SG TVS
Détail de la traverse
Largeur de face 50 mm

VISS Basic SG TVS
Detail of transom
Width 50 mm



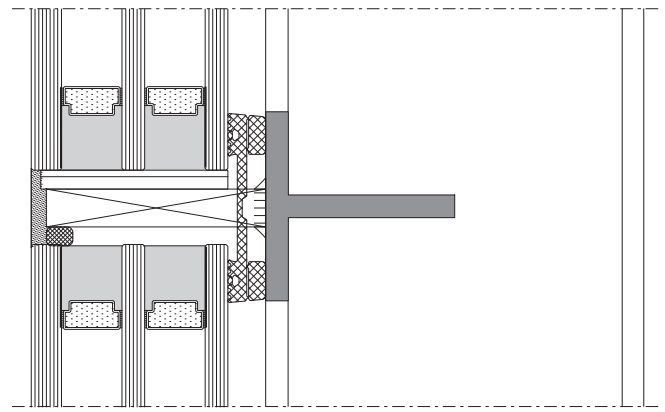
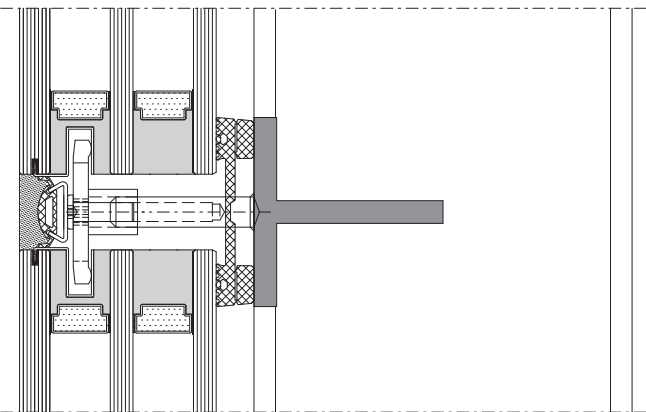
D-531-C-005

D-532-C-008

VISS Basic SG TVS
Riegel-Detail
Ansichtsbreite 50 mm

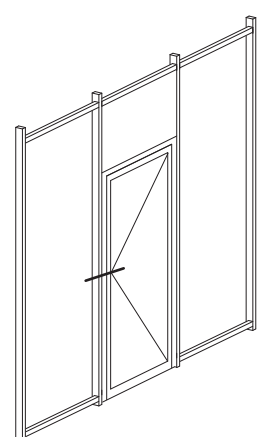
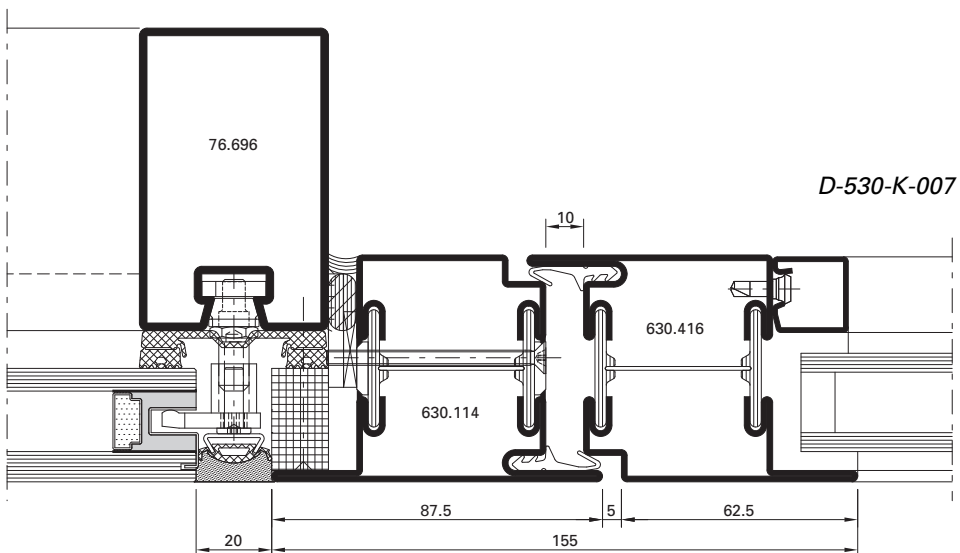
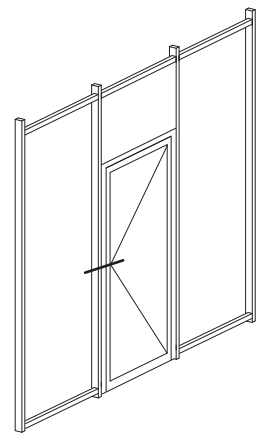
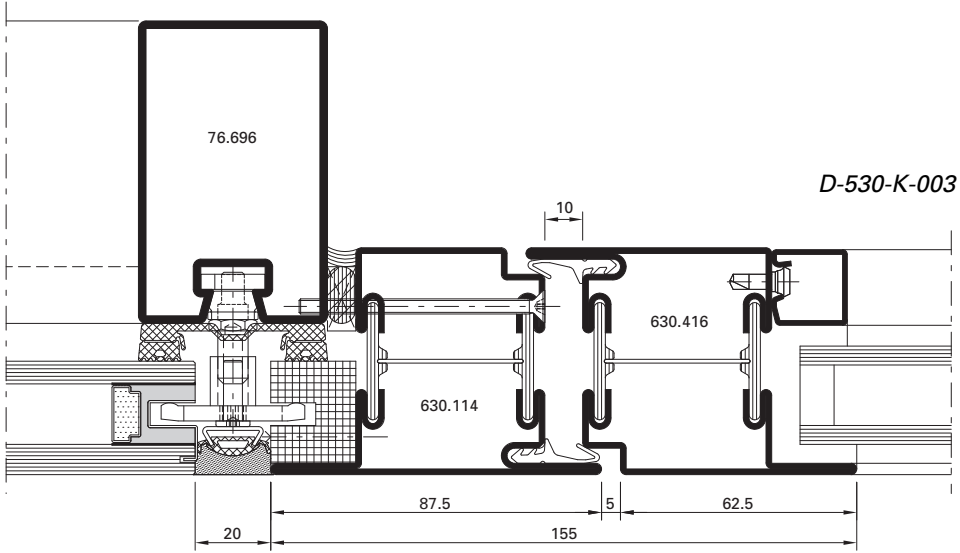
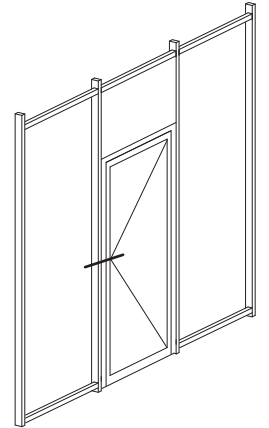
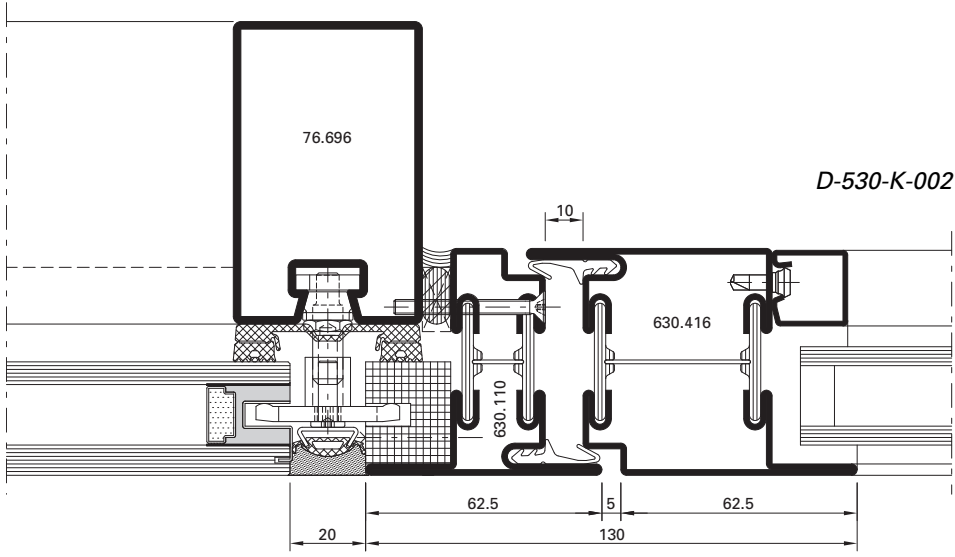
VISS Basic SG TVS
Détail de la traverse
Largeur de face 50 mm

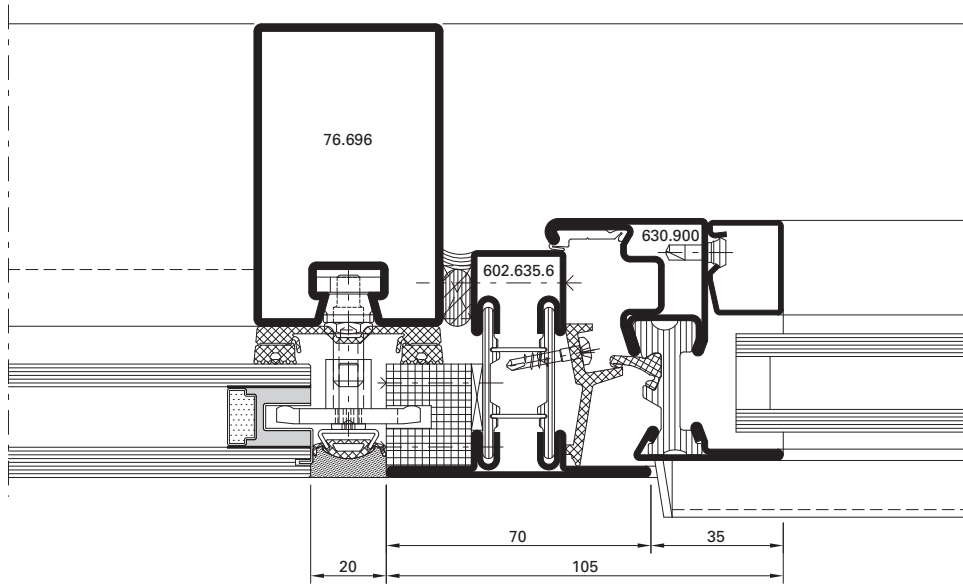
VISS Basic SG TVS
Detail of transom
Width 50 mm



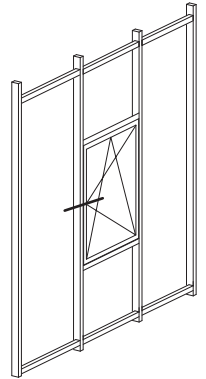
D-532-C-004

D-532-C-009



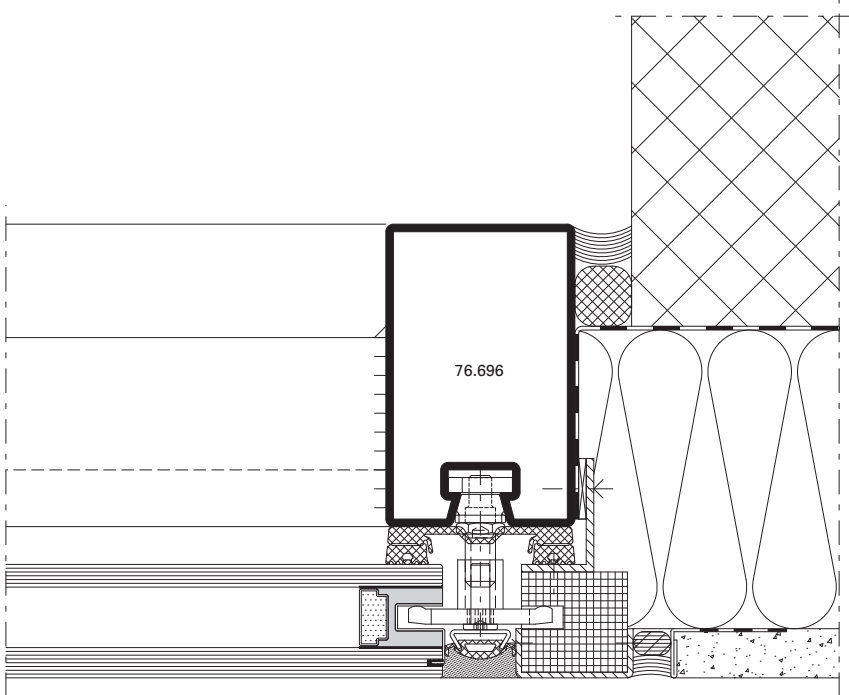


D-530-K-001

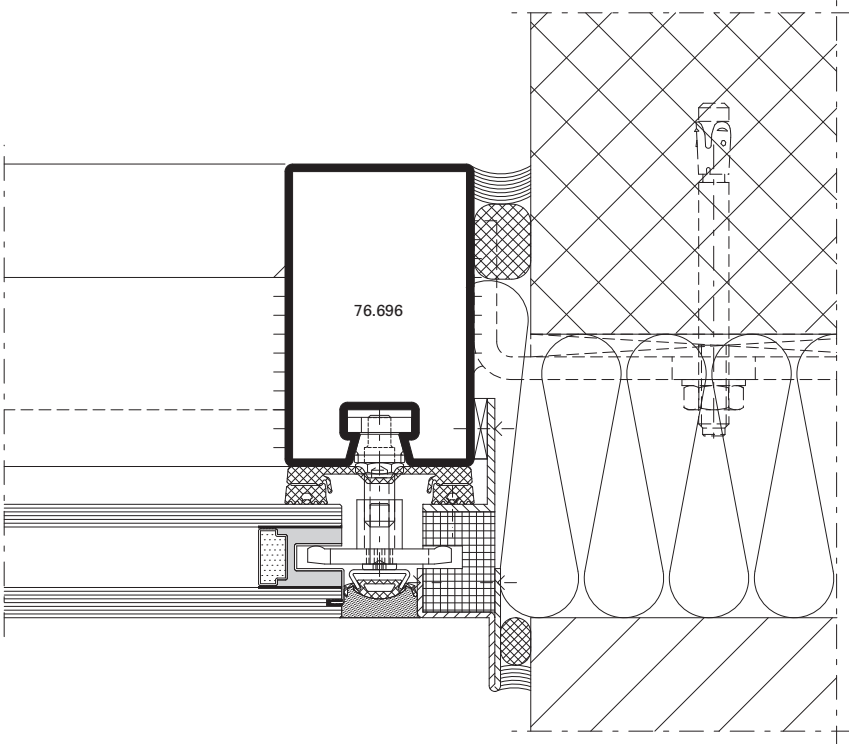
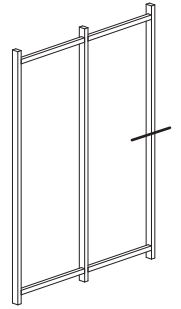


Anschlüsse am Bau im Massstab 1:2
Raccords au mur à l'échelle 1:2
Attachment to structure on scale 1:2

VISS SG-Fassaden
Façades VISS SG
VISS SG façades



D-530-A-005



D-530-A-006

